

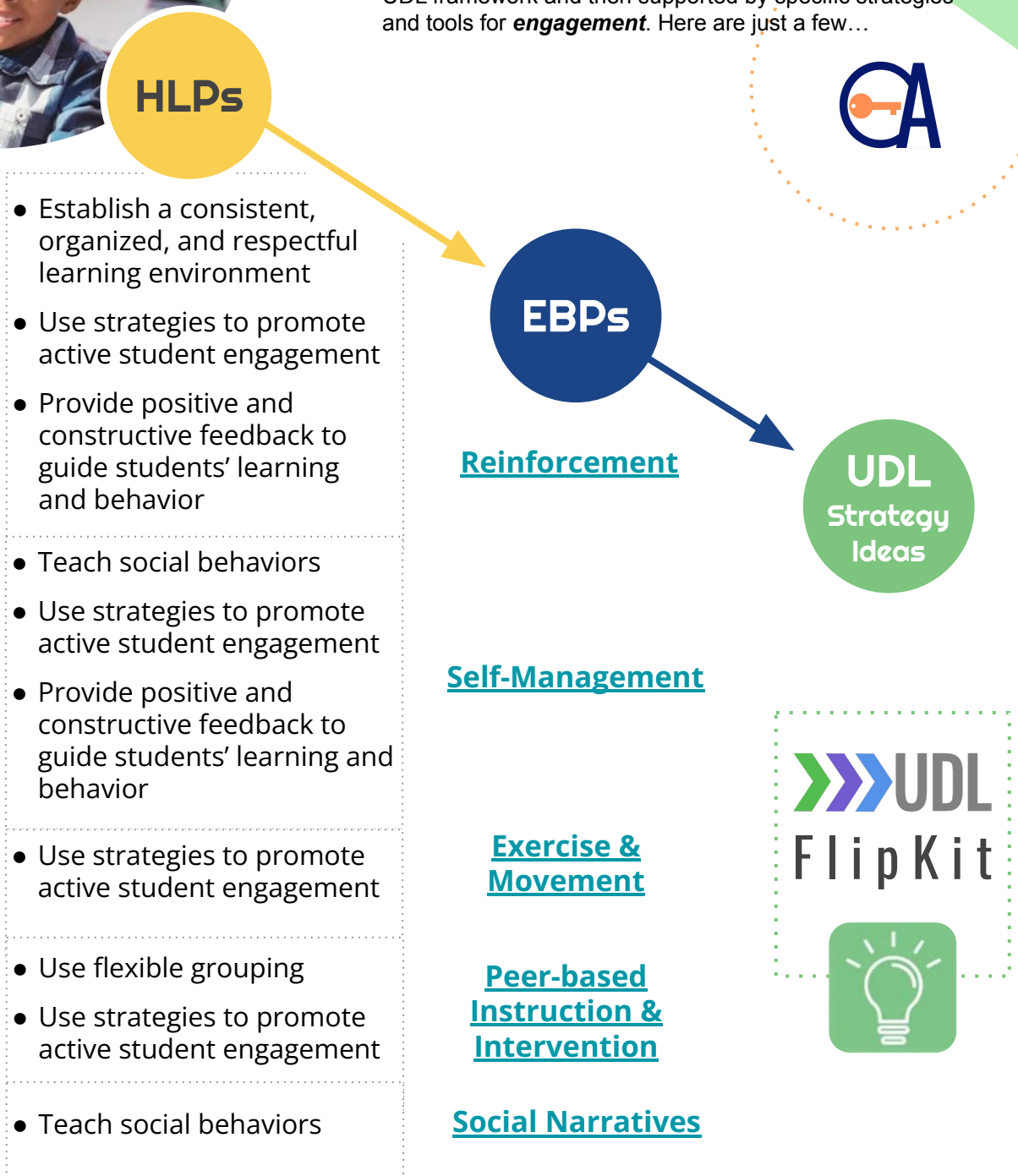


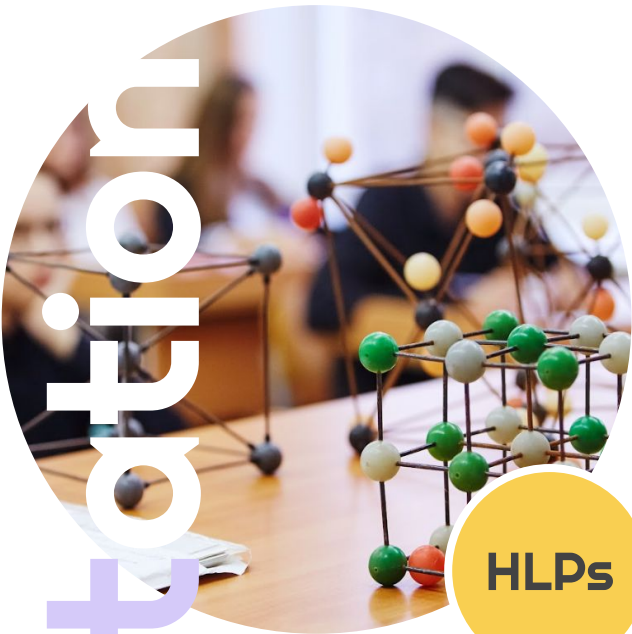
# Engagement

## Making Connections Universal Design for Learning &

- High-Leverage Practices (HLPs)
- Evidence-Based Practices (EBPs)

There are many connections to be made between HLPs and EBPs. The two practices can be viewed through a lens of the UDL framework and then supported by specific strategies and tools for **engagement**. Here are just a few...



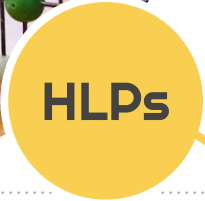


# Representation

## Making Connections Universal Design for Learning &

- High-Leverage Practices (HLPs)
- Evidence-Based Practices (EBPs)

There are many connections to be made between HLPs and EBPs. The two practices can be viewed through a lens of the UDL framework and then supported by specific strategies and tools for **representation**. Here are just a few...



- Establish a consistent, organize, and respectful learning environment
  - Adapt curriculum tasks and materials for specific learning goals
  - Teach cognitive and metacognitive strategies to support learning and independence
  - Provide scaffolding supports
- 
- Adapt curriculum tasks and materials for specific learning goals
  - Use strategies to promote active student engagement
  - Use assistive and instructional technologies
- 
- Use explicit instruction
- 
- Provide scaffolding supports
  - Use explicit instruction
  - Provide intensive instruction
- 
- Use flexible grouping
  - Use strategies to promote active student engagement
- 
- Provide scaffolding supports
- 
- Teach social behaviors



Visual Supports

Technology-aided Instruction & Intervention

Video Modeling

Direct Instruction & Modeling

Peer-based Instruction & Intervention

Prompting

Social Narratives




## Making Connections Universal Design for Learning &

- High-Leverage Practices (HLPs)
- Evidence-Based Practices (EBPs)

Many connections can be made between HLPs and EBPs. The two practices can be viewed through a lens of the UDL framework and then supported by specific strategies and tools for **action & expression**. Here are just a few...



# Action & Expression

HLPs

- Establish a consistent, organized, and respectful learning environment
- Adapt curriculum tasks and materials for specific learning goals
- Teach cognitive and metacognitive strategies to support learning and independence
- Provide scaffolding supports

- Adapt curriculum tasks and materials for specific learning goals
- Use strategies to promote active student engagement
- Use assistive and instructional technologies

- Identify and prioritize long & short term learning goals
- Systematically design instruction toward a specific learning goal

- Teach social behaviors

- Provide scaffolding supports

EBPs

Visual Supports

Technology-aided Instruction & Intervention

Task Analysis

Social Narratives

Prompting



UDL  
Strategy  
Ideas

UDL  
FlipKit

